



Zap! Creatives - Laser Cutting

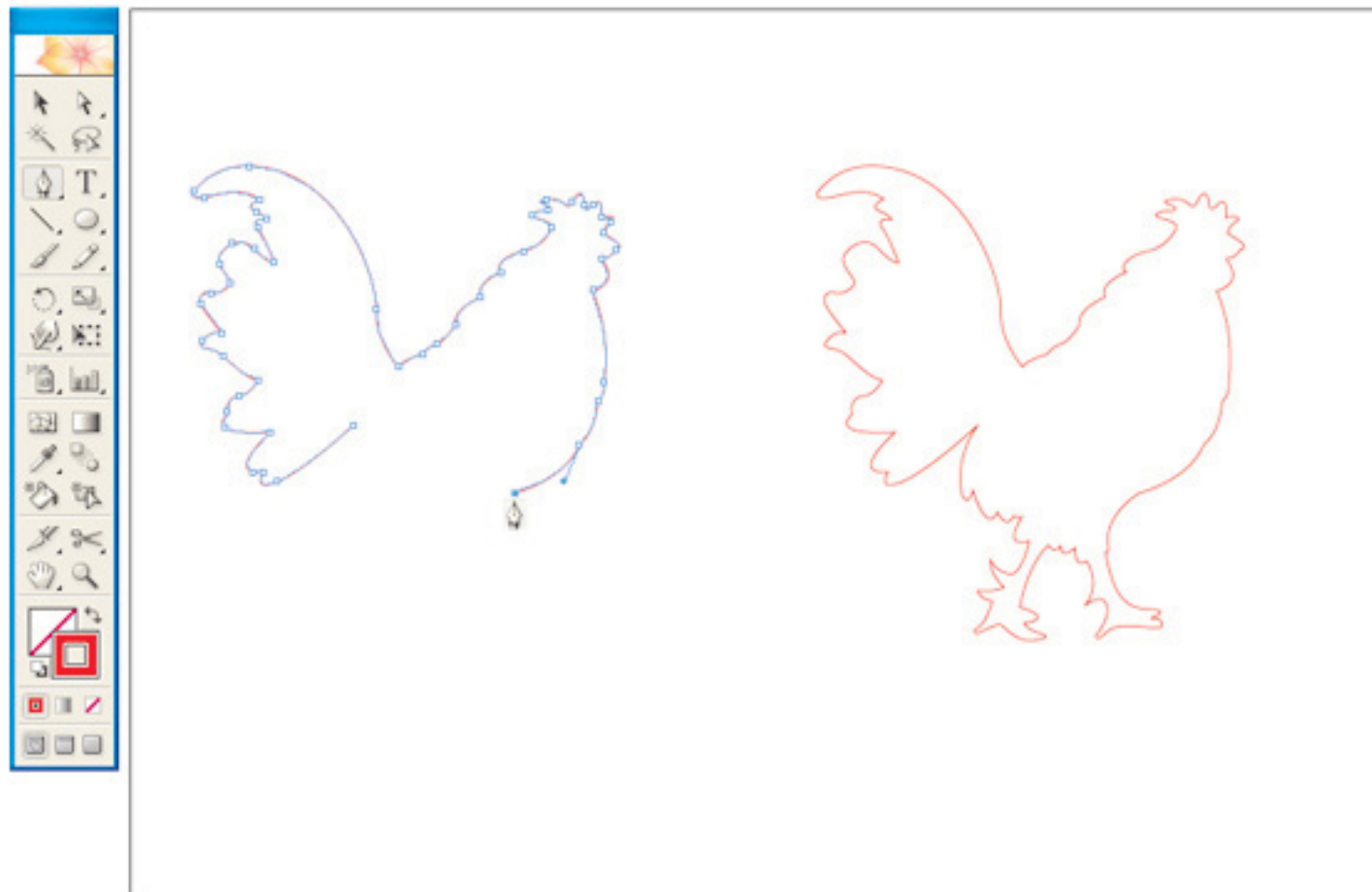
Preparing your files in Illustrator





Step 1. Creating the outline

Using the pen tool draw the outline (path) of your design. You may choose to either draw it straight onto the page or scan in a sketch and trace over it.



As the shape will be cut out you will need to make sure that the path is continuous and that there are no gaps in the design.

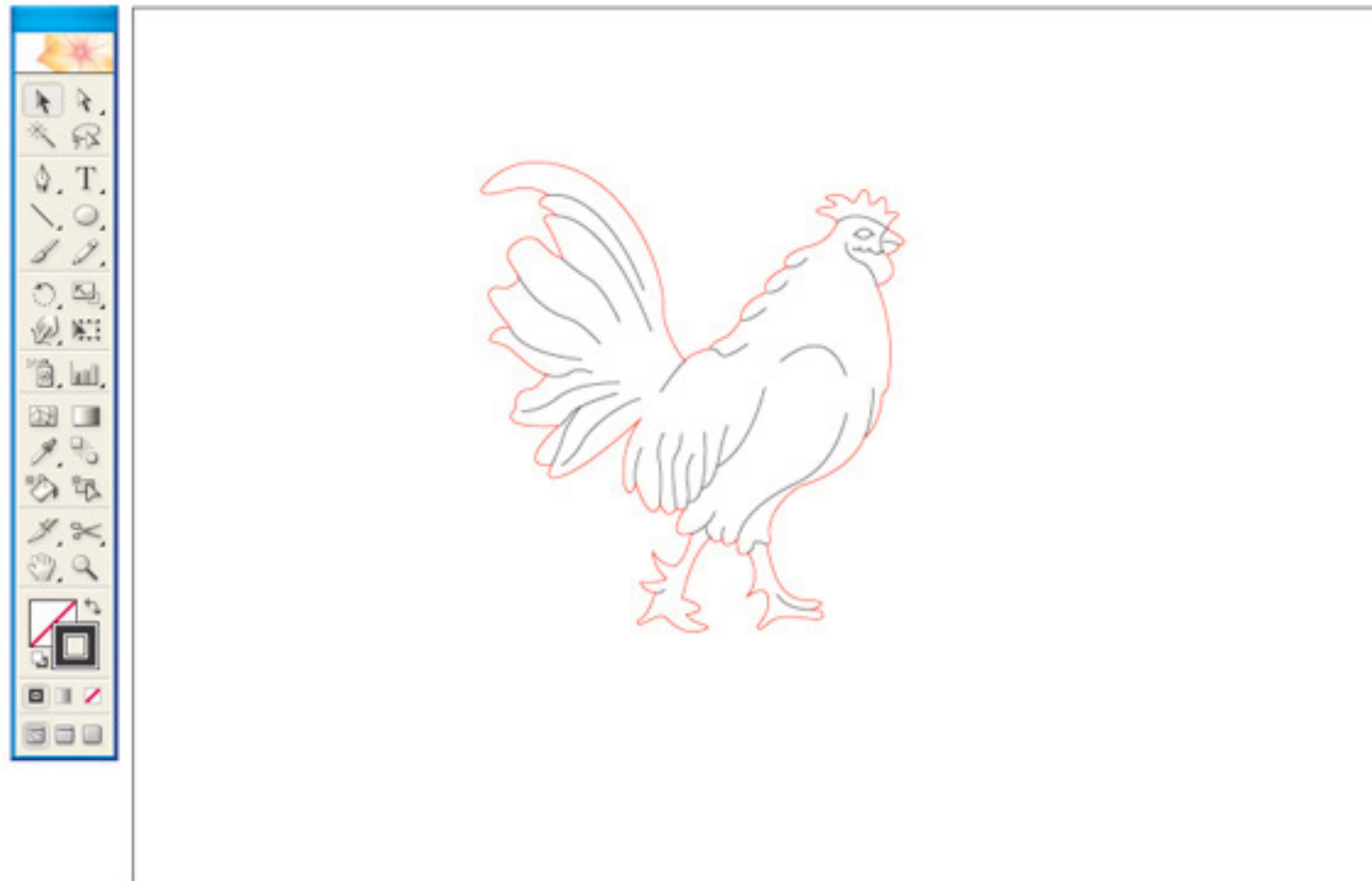
- + Set the stroke colour to R:255 G:0 B:0 with no fill.
- + Set the line weight to 0.001pt





Step 2. Adding fine engraved details (vector)

Using the pen tool again add engraving details to your design where you would like the laser to make a mark.



HINT! - Please note that we engrave details on the front of coloured acrylic and on the back of mirrored acrylic so please let us know if you would like your image reversing or if you have done this yourself before we engrave any details.

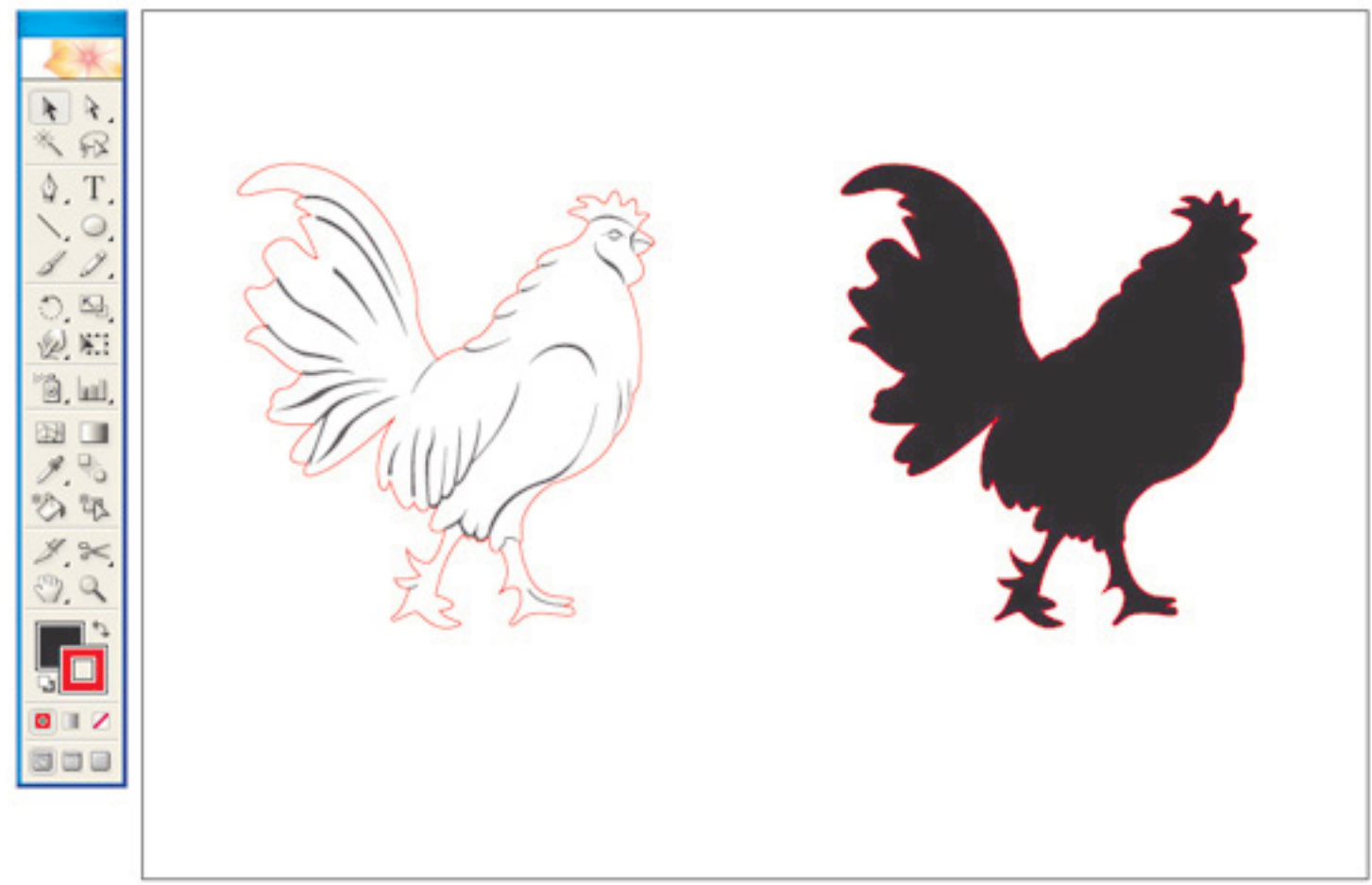
- + Set the stroke colour to R:0 G:0 B:0
- + Set the line weight to 0.001pt for thin engraved lines (vector engraving). For thicker engraved lines and fills (raster engraving) see the next step.





Step 3. Adding thicker engraved lines & fills (Raster)

Where thicker lines or fills are required we can programme the laser to raster engrave. Raster engraving causing the laser to engrave in a side to side motion in much the same way as a desktop printer prints a document; allowing you to create thicker lines and filled engraving detail.



HINT! - When working with raster engraved lines and fills it is important to remember that you do not need an outline.

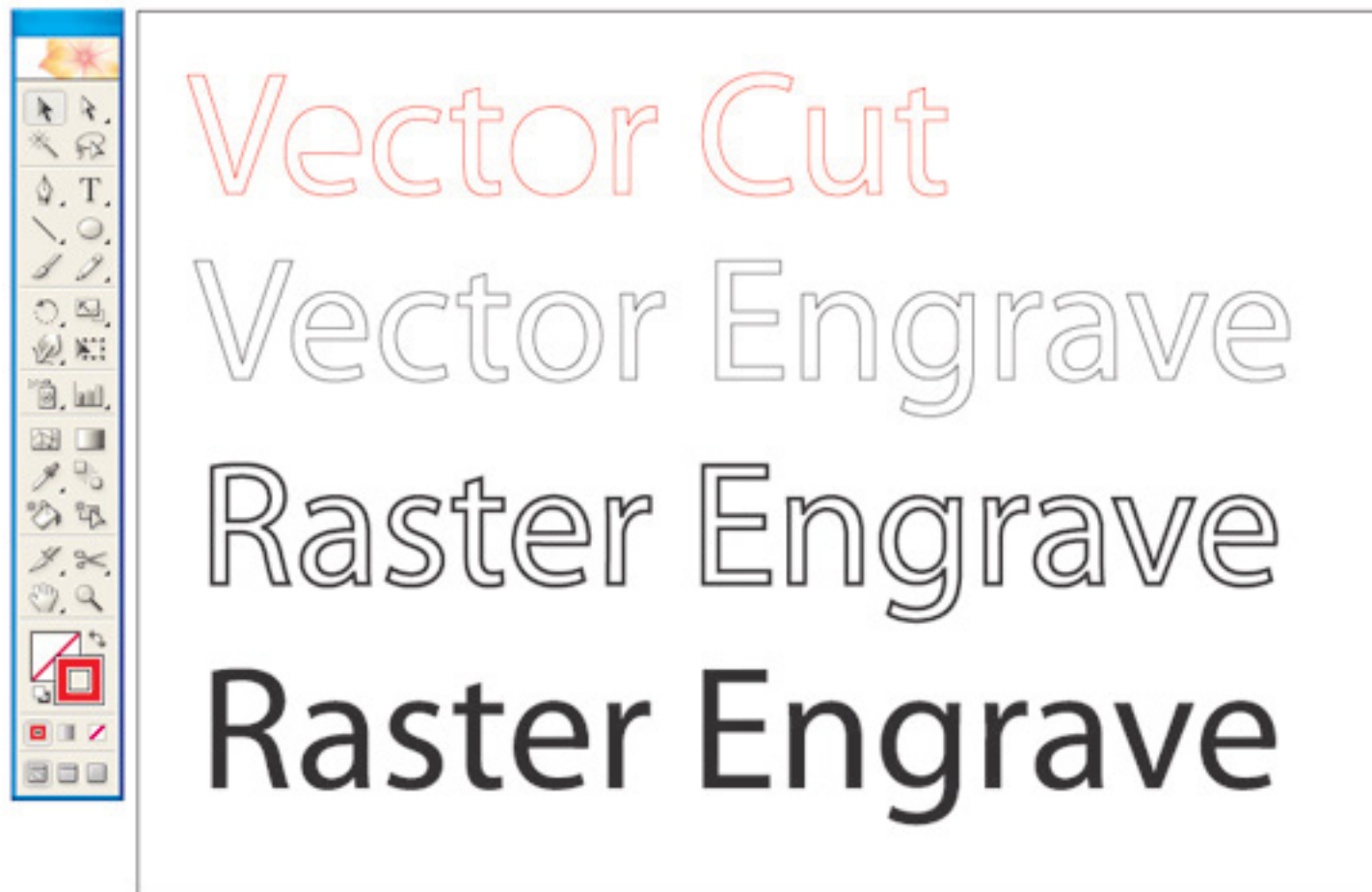
- + Set the fill colour to R:0 G:0 B:0
- + Set the line weight to your desired preference and the laser will raster engrave your design to your specified settings.
- + See our 'laser cut charms' section under 'Products' for some raster engraved inspiration!





Step 4. Working with text

Adding text to your designs can provide a personal touch and offer an opportunity to make your customers aware of your brand. Text can be either engraved or cut out of your chosen materials.



HINT! - The middles (islands) of certain letters will fall out when they are cut and could make your text unreadable. Consider this when choosing your typeface.

- + Set the stroke colour to R255 G:0 B:0 for cutting -OR- R0 G:0 B:0 for engraving.
- + All text should be converted to paths before submitting your designs. To do this select your text and go to TYPE > CREATE OUTLINES

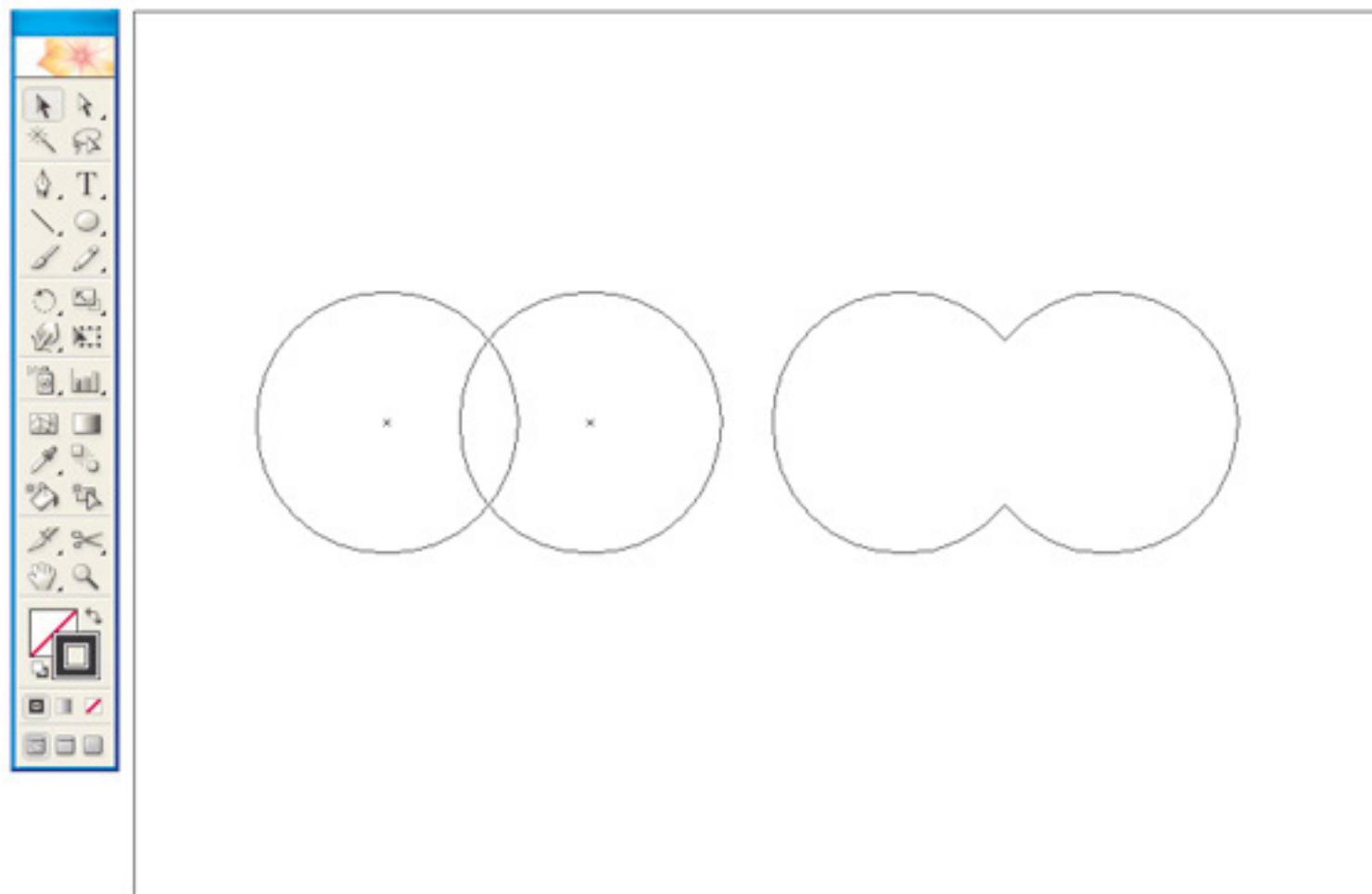




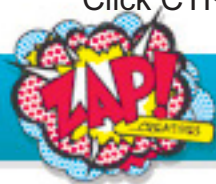
Step 5. Final checks

Once you are happy with your design go through the following checks to make sure that your files are cut ready...

- + Are my cutlines R:255 G:0 B:0 and 0.001pt in weight with no colour fills
- + Are my cutlines continuous
- + Do any of my cutlines overlap
- + Are my vector engraving lines 0.001pt and R:0 G:0 B:0
- + Is my text converted to paths (outlines)
- + Do I have any duplicate lines in my design (Duplicate lines will often appear darker or thicker than normal lines)



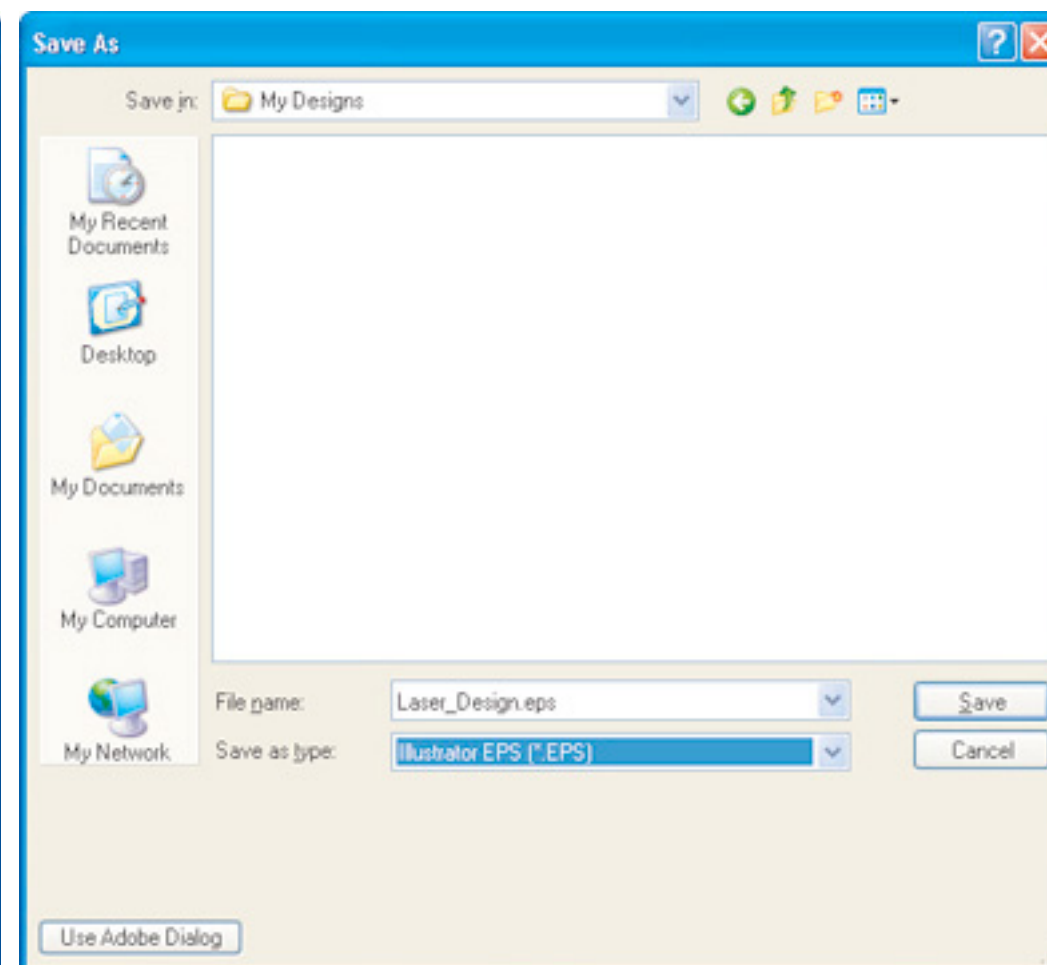
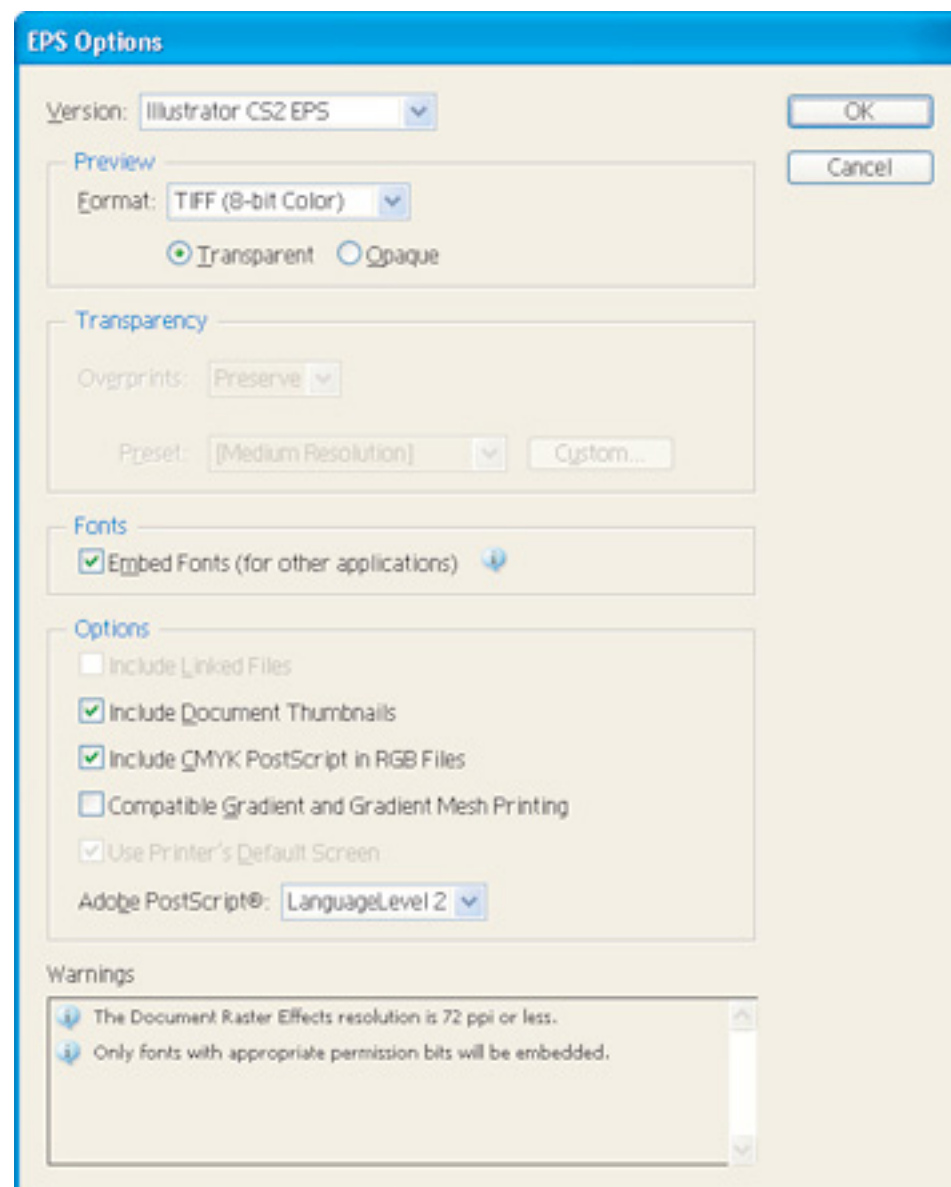
HINT! - View your document as an outline (CTRL+Y) as this is how the laser will view it. Now check for overlapping lines again. Click CTRL+Y to return to your normal view. (see above screengrab for how the laser will view your design)





Step 6. Saving and submitting your work

Now that all of your checks have been completed it's time to save your work. Go to FILE > SAVE AS and select 'Illustrator EPS' as your format. Click 'Save' and 'OK' on the screen that follows.



Now email your designs across to us at... info@zapcreatives.com

